

# Slidell EOC Hamfest and Louisiana ARRL State Convention

(Slidell City Auditorium)

- **Friday October 7, 2022**

- 8:00am – 2:00pm Vendor Table Setup (Enter through back ramp)
- 10:00am – 2:00pm Flea Market Table Setup (Enter through back ramp)
- 2:00pm – 5:00pm Hamfest Open to all (Lobby Entrance)

- **Saturday October 8, 2022**

- 7:30am – 8:00am Hamfest open to vendors and flea marketeers (back ramp)
- 8:00am – 3:00pm Hamfest Open to all (Lobby Entrance) with hourly door prizes
- 2:30pm – 3:00pm Main prizes drawings
- 3:00pm – 5:00pm Vendor and Flea Market breakdown

# SLIDELL EOC\* 2022 HAMFEST and ARRL LOUISIANA STATE CONVENTION

SLIDELL CITY AUDITORIUM 2056 2nd St, Slidell, LA 70458

**Friday October 7, 2022 2:00pm - 5:00pm**  
**Saturday October 8, 2022 8:00am - 2:30pm**

**ADMISSION: Adults: \$5 (Includes 1 Raffle Ticket - good for both days) - 12 & Under: Free**

\* Talk-in: 147.27 MHz (+600 kHz) PL 114.8 Hz \* ARRL Sanctioned Hamfest \* Unique Local Attractions



*The Ozone Amateur Radio Club is pleased to sponsor the 2022 Slidell EOC HAMFEST.*

*Browse the latest from our featured vendors. Sell used gear for extra cash!*

*Find that perfect addition for your rig. Raffle tickets: \$1 each or 6 for \$5.*



## FORUMS

**Dave Hartley, K5OZ**

❖ Lightning Rig Saver (LRS)  
Saturday, 9-10a.m.

**Elmer Tatum, N5EKF**

❖ Citizen Emergency Response Team  
Saturday, 10-11a.m.

**Emile Diodene, KE5QKR**

❖ The Digital Ham World  
Saturday, 11-12p.m.

**Jim Coleman/Mark  
Robertson, K5JMR**

❖ ARRL Forum, Saturday, 1-2p.m.



## MAIN PRIZES

**1st - Yaesu  
FTM-400XDR**



**2nd - Yaesu  
FTM-200DR**



**3rd - Yaesu  
FT-70DR**

**4th & 5th  
Yaesu FT-65R**



**6th to 10th  
Yaesu FT-4XR**

**11th - \$100 Gift Certificate  
from DX Engineering**

For 1st, 2nd and 3rd prize you do not have to be present to win. For 4th through 11th prize you must be present to win or it will be redrawn.

## VENDORS

**Ham World, Inc.  
The Sign Man  
TN07 Engineering  
N5IAW Connectors  
Cajun RF**

*\*confirmed as of 07/11/22*

## FLEA MARKET

**Tables (3' x 8') - \$10**  
*(Does not include cost of admission)*

## ARRL VE TESTING

*Technician, General & Amateur Extra*

❖ Testing Starts Saturday at 8:30am

❖ Need FRN # from FCC:

[apps.fcc.gov/coresWeb/publicHome.do](https://apps.fcc.gov/coresWeb/publicHome.do)

❖ Testing Fee \$15, Cash Only

❖ Must pre-register via  
Paula @ 985-290-1096

## MORE INFO:

[www.w5sla.net/hamfest-2022.htm](http://www.w5sla.net/hamfest-2022.htm)

\*Emergency Operations Center

REV-03 08/05/2022

## CONTACT US:

OARC - PO Box 553, Slidell, LA 70459

E-mail: [hamfest@w5sla.net](mailto:hamfest@w5sla.net) Web: [www.w5sla.net](http://www.w5sla.net)

# Slidell City Auditorium

2056 Second Street, Slidell LA. 70458





# OARC Hamfest Layout 10/7-8/2022 Rev 8

Main  
Entrance  
on 2<sup>nd</sup> St.

Lobby

Kitchen

Forum Room

Testing

Ham Radio World Inc.

The Sign Man

GRMS Dude

TNO7 Engineering

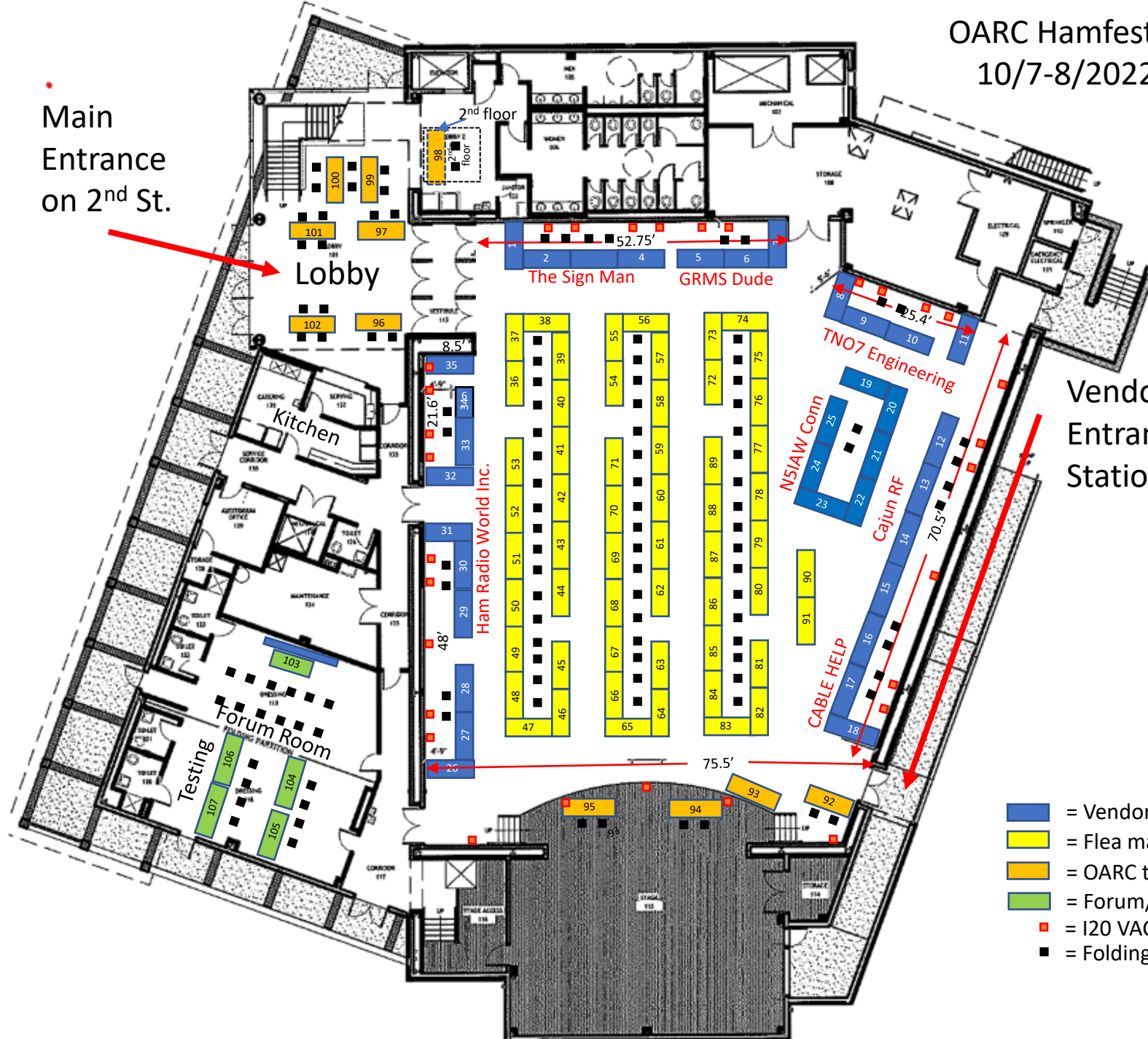
N5IAW Conn

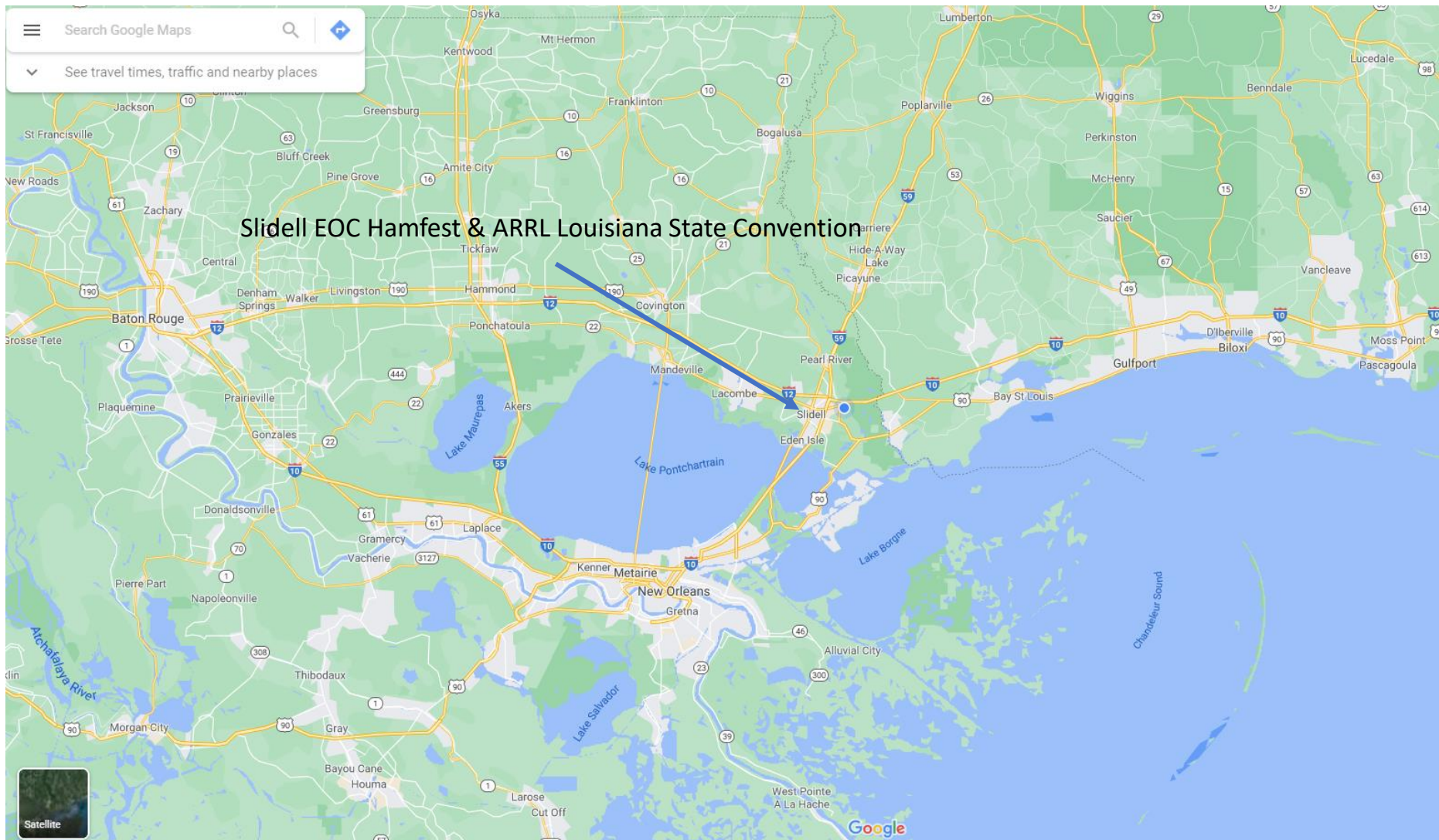
Cajun RF

CABLE HELP

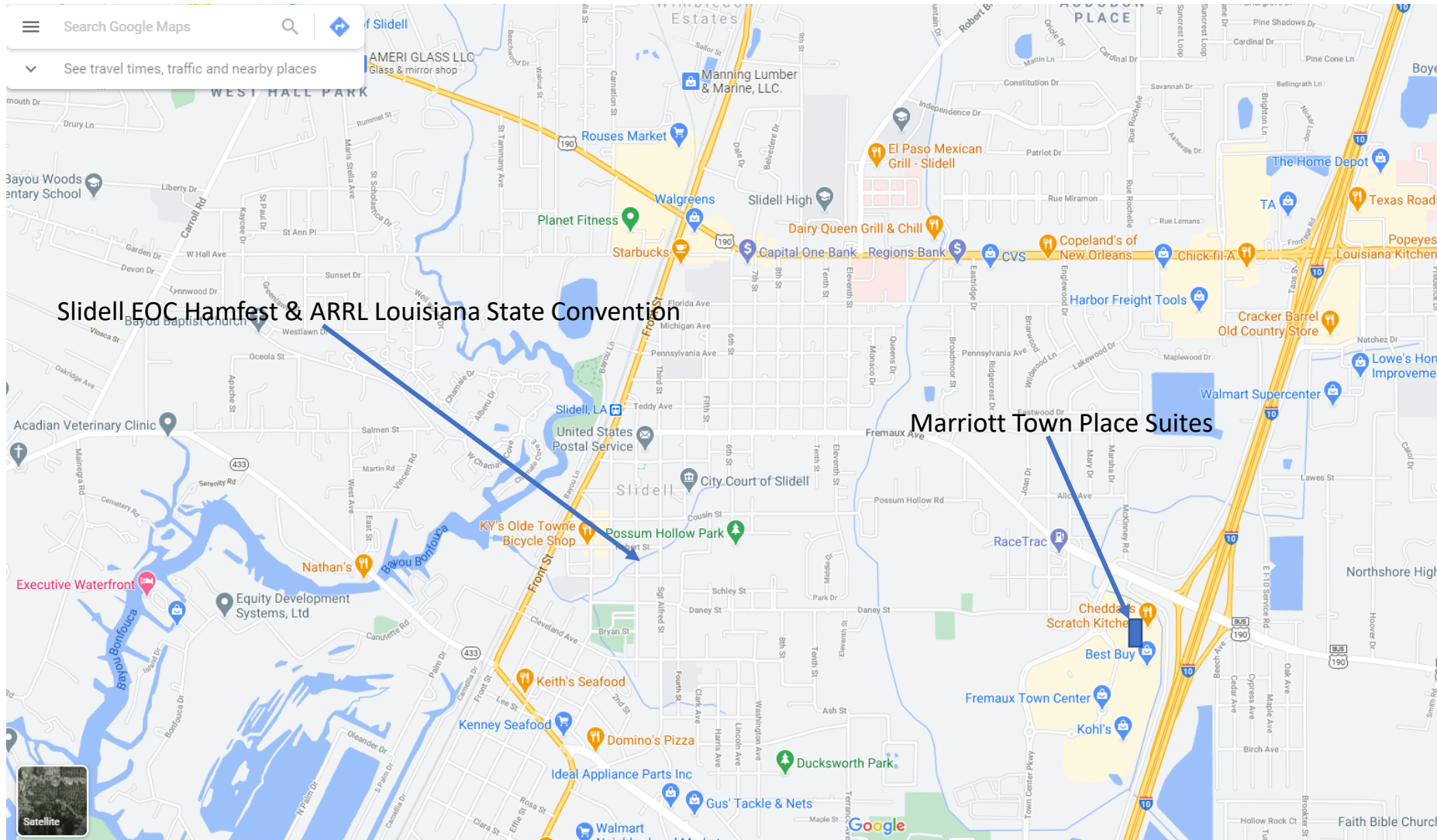
Vendor/Flea-Market  
Entrance by Old Fire  
Station

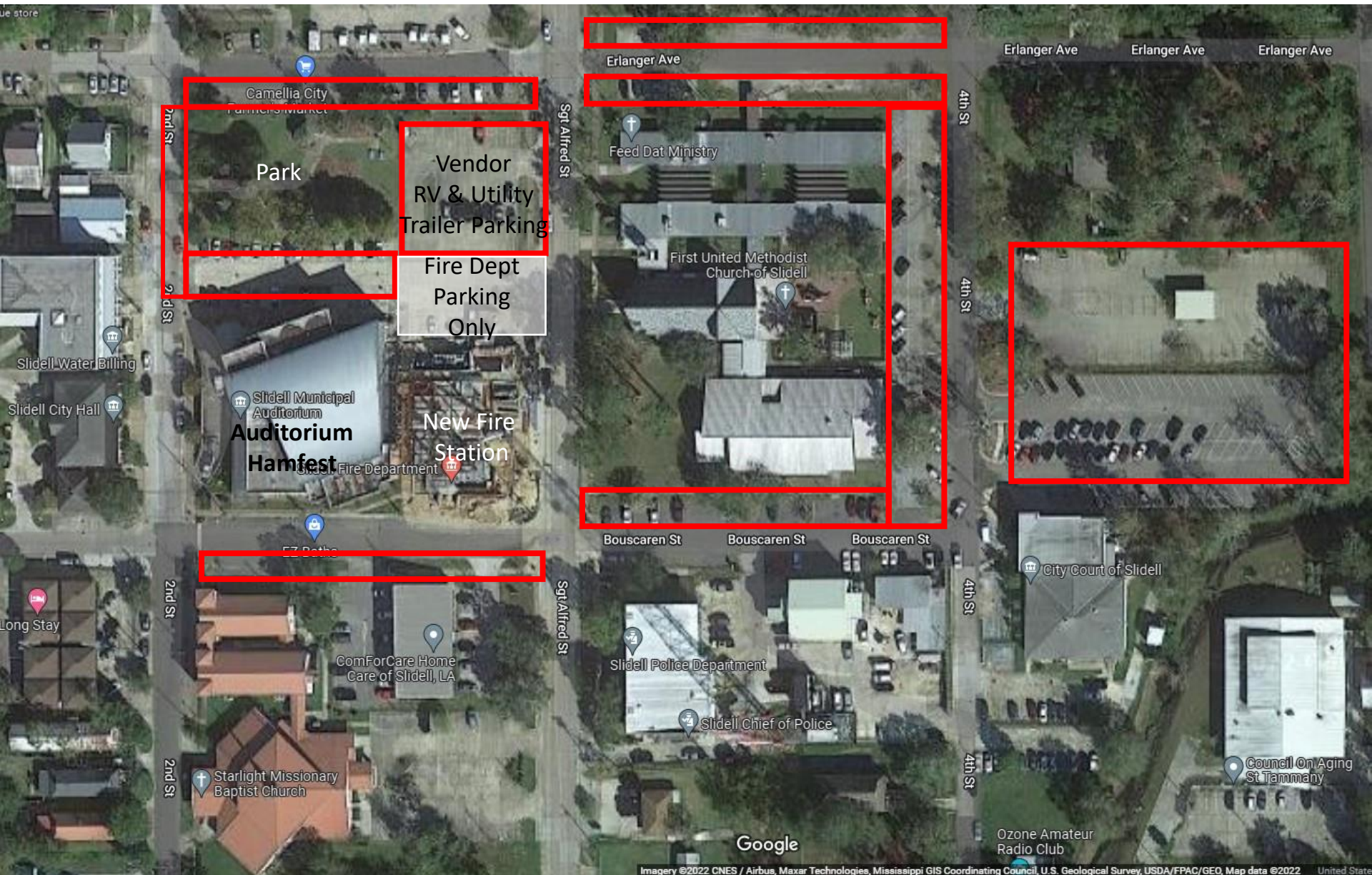
- = Vendor tables (3x8')
- = Flea market tables (3x8')
- = OARC tables (3x8')
- = Forum/Testing tables (3x6')
- = I20 VAC Outlet
- = Folding Chair











Ham Fest Parking Outlined in Red