

Slidell EOC 2026 Hamfest Info

(Slidell City Auditorium)

- **Friday September 4, 2026**

- 8:00am – 2:00pm Vendor Table Setup (Enter through back ramp)
- 10:00am – 2:00pm Flea Market Table Setup (Enter through back ramp)
- 2:00pm – 5:00pm Hamfest Open to all (Lobby Entrance)

- **Saturday September 05, 2026**

- 7:30am – 8:00am Hamfest open to vendors and flea marketeers (back ramp)
- 8:00am – 3:00pm Hamfest Open to all (Lobby Entrance) with hourly door prizes
- 2:00pm – 2:30pm Main prizes drawings
- 2:30pm – 5:00pm Vendor and Flea Market breakdown

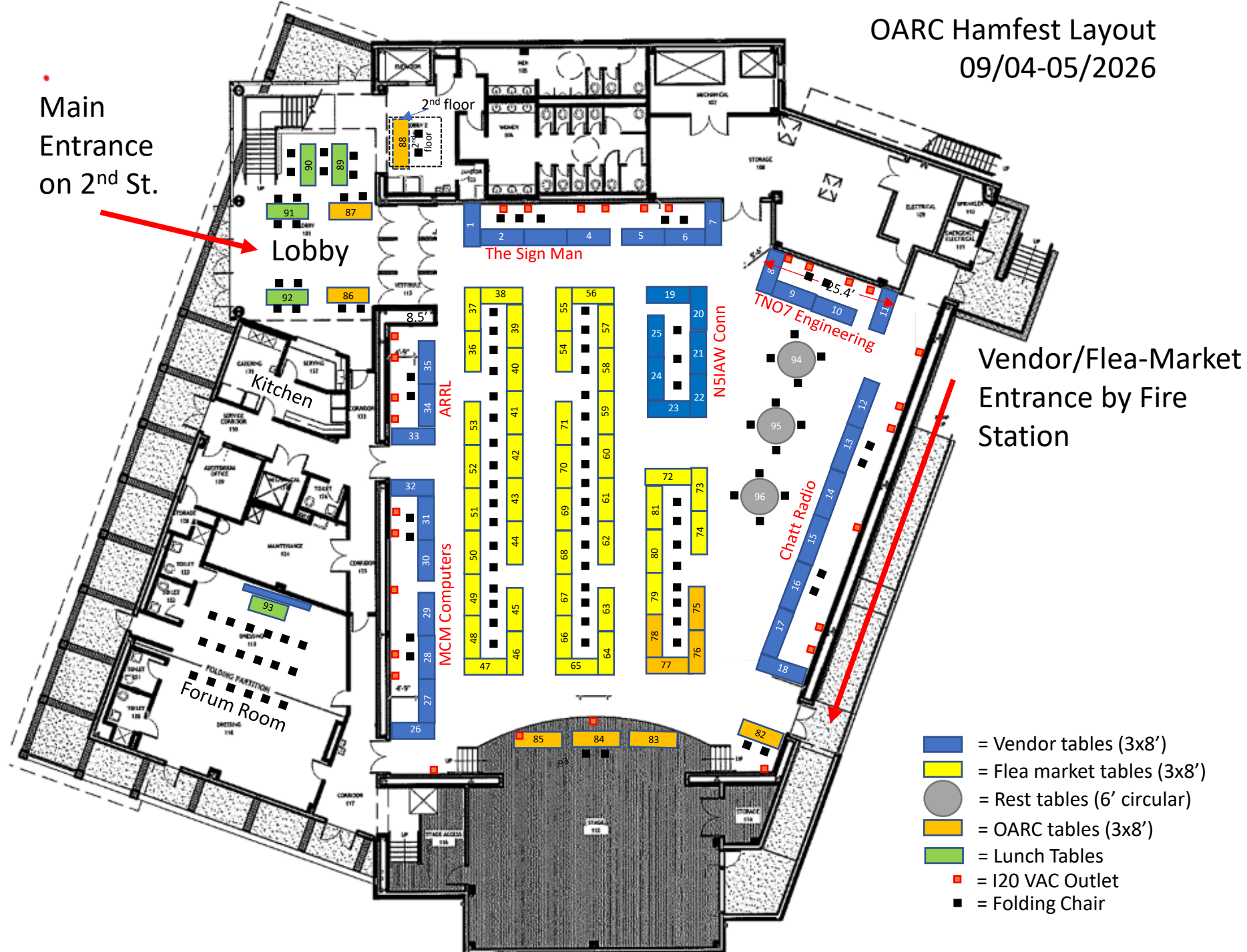
Hamfest webpage: <https://w5sla.net/hamfest.htm>

Table reservations email to: hamfest@w5sla.net

List on email: Quantity of tables and entrance tickets needed

OARC Hamfest Layout 09/04-05/2026

Main Entrance on 2nd St.



- = Vendor tables (3x8')
- = Flea market tables (3x8')
- = Rest tables (6' circular)
- = OARC tables (3x8')
- = Lunch Tables
- = I20 VAC Outlet
- = Folding Chair

SLIDELL EOC* 2026 HAMFEST

SLIDELL CITY AUDITORIUM 2056 2nd St, Slidell, LA 70458

Friday Sept. 4, 2026 2:00pm - 5:00pm
Saturday Sept. 5, 2026 8:00am - 2:30pm



ADMISSION: Adults: \$10 (Includes 1 Raffle Ticket - good for both days) - 12 & Under: Free

* Talk-in: 147.27 MHz (+600 kHz) PL 114.8 Hz * ARRL Sanctioned Hamfest * Unique Local Attractions



The Ozone Amateur Radio Club is pleased to sponsor the 2026 Slidell EOC HAMFEST.

Browse the latest from our featured vendors. Sell used gear for extra cash!

Find that perfect addition for your rig. Raffle tickets: \$1 each or 6 for \$5.

Admission includes a raffle ticket



FORUMS

FORUMS (Saturday)

❖ 09:00 to 09:45 - NWS Spotter Talk
by TBD

❖ 10:00 to 10:45 - ARES
by Jim Coleman (A15B)

❖ 11:00 to 11:45 - ARRL
by Houston Polson (N5YS)

❖ 12:00 to 12:45 - POTA
by Paul Owen (KJ5GKK)
"The Southern Ham"

❖ 13:00 to 13:45 - Digital Modes
by Emile Diodene (KE5QKR)



MAIN PRIZES

TBD

VENDORS*

Chatt Radio
The Sign Man
N5IAW Connectors
TN07 Engineering

*confirmed as of 05/04/2026

FLEA MARKET

Tables (3' x 8') - \$10
(Does not include cost of admission)

ARRL VE TESTING

Technician, General & Amateur Extra

❖ Testing Starts at 10:00am across 2nd St.

❖ Need FRN # from FCC: www.fcc.gov

❖ Testing Fee \$15, Cash Only

❖ Must pre-register 985-290-9298 (Steve)

MORE INFO:

www.w5sla.net/hamfest.htm

*Emergency Operations Center

REV-02 06/18/2026

CONTACT US:

OARC - PO Box 553, Slidell, LA 70459

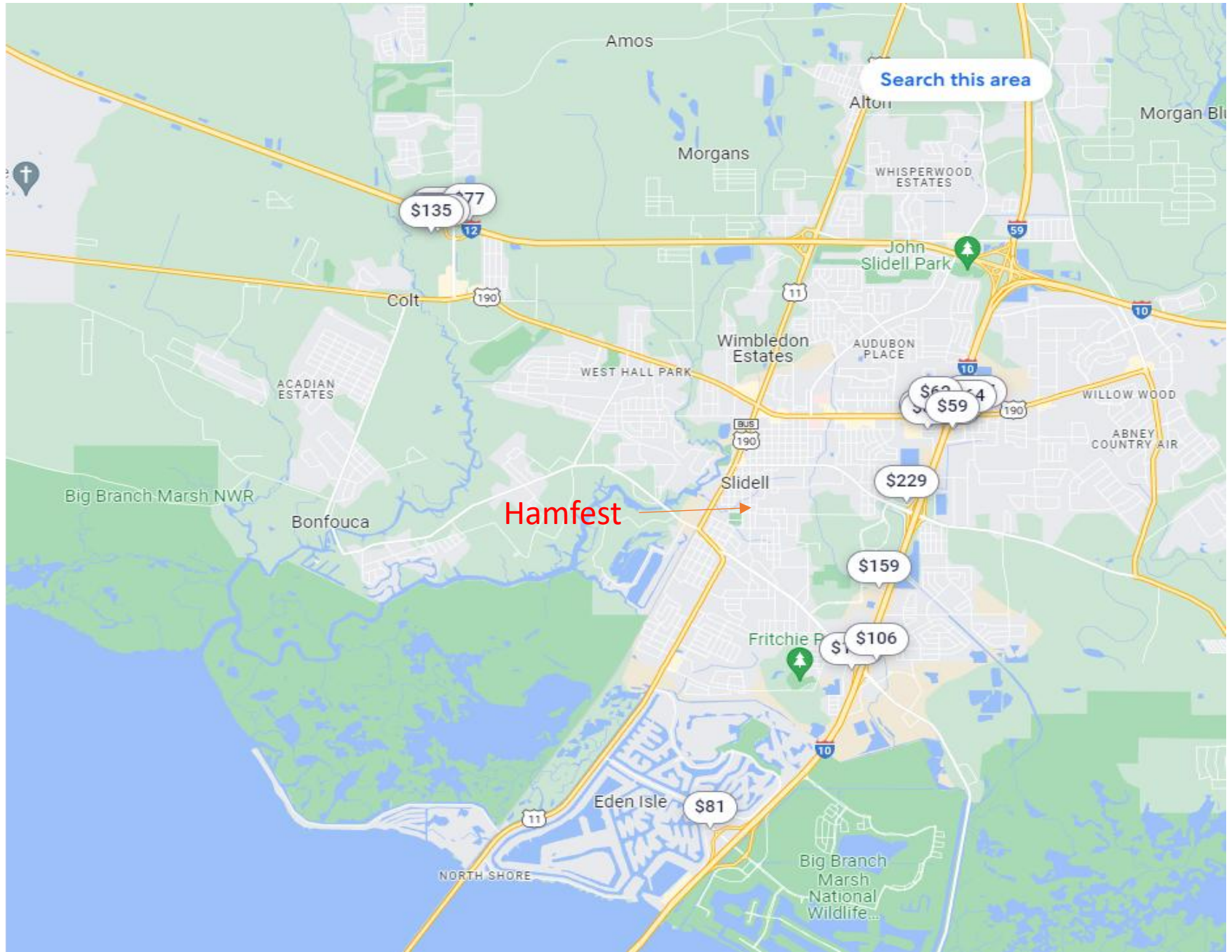
E-mail: hamfest@w5sla.net Web: www.w5sla.net

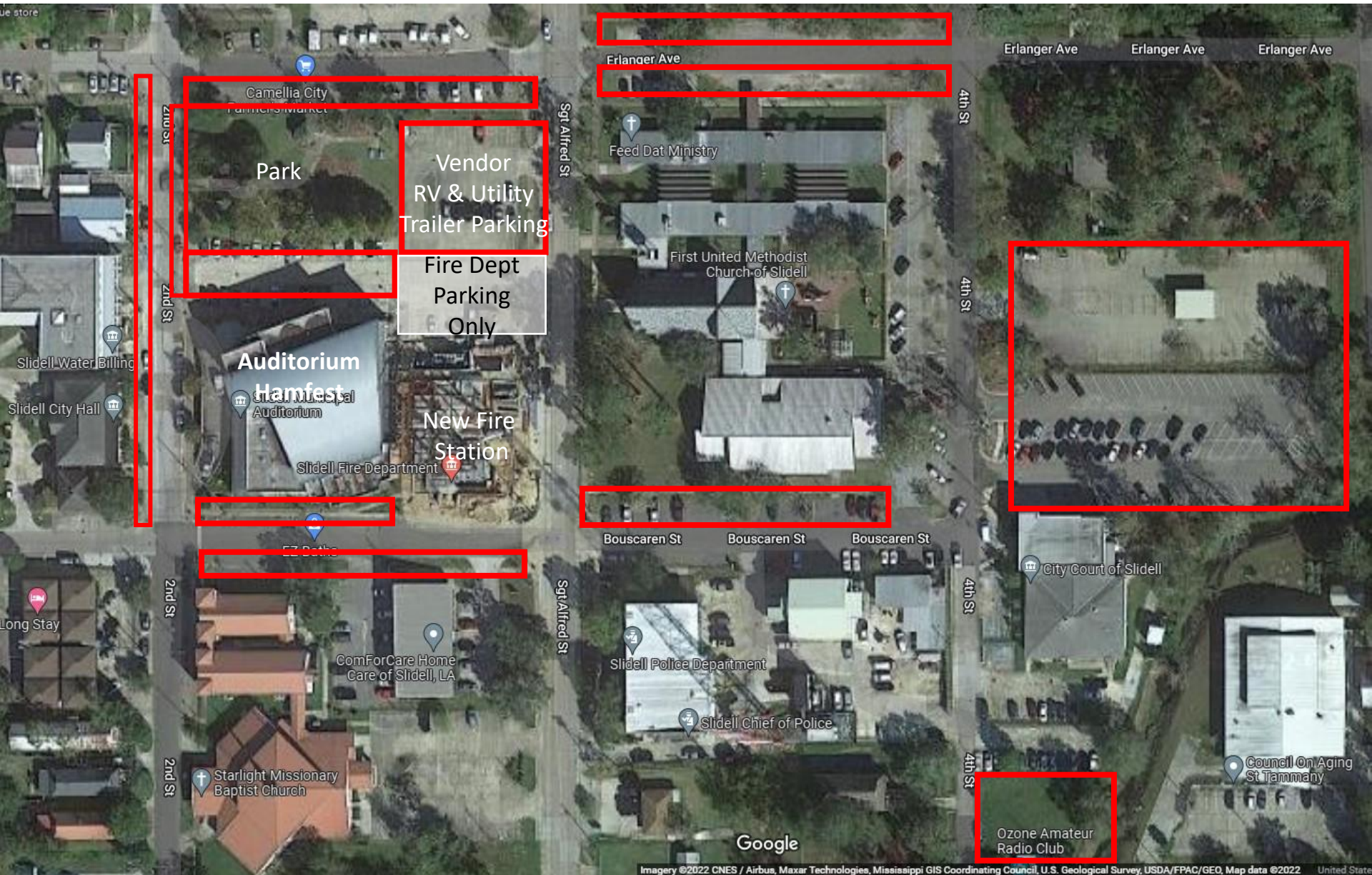
Slidell City Auditorium

2056 Second Street, Slidell LA. 70458



Hotels in the Slidell Area: <https://www.expedia.com/Hotel->





Ham Fest Parking Outlined in Red